

# Inside TraX

A publication for Berry Tractor and Equipment customers

BerryTractor.com

August 2018



**HAMM**  
COMPANIES

L to R: Ryan Blosser - Hamm Co.,  
Jake Zeka - Berry Tractor, Chase Kesl - Hamm Co.

# A MESSAGE FROM the PRESIDENT



Jon Berry,  
President

Komatsu is constantly innovating across all product class and sizes. This issue of Inside Trax highlights several ways Komatsu works to stay on the cutting edge.

For the past 10 years, Komatsu has led the pack with their Autonomous Haulage System (AHS). Using precise GPS as well as other systems, Komatsu's driverless trucks have moved more than 1.5 billion tons of material efficiently and safely throughout the world. While AHS trucks are typically found in mining applications with large excavators, Komatsu has you covered on the smaller end of the spectrum as well. The new PC238USLC-11's tight tail counterweight is well suited for applications with limited space having a swing radius no larger than its undercarriage width.

If your needs are more in the mid range of the spectrum, Komatsu has you covered there as well with their innovative intelligent Machine Control PC390LCi-11. Recently introduced, in addition to fully integrated GPS controls, it offers exceptional stability and lifting capacity. A great fit for heavy trenching applications, intelligent Machine's are easily incorporated into Komatsu's SMARTCONSTRUCTION initiative. Read more about the PC390LCi-11 and all intelligent Machine Control products in this month's edition of Inside Trax.

With 61 years in business covering Kansas and Southwest Missouri, Berry Tractor has the solutions you need to help you tackle an ever-changing market. If there is anything we can do for you, please call or stop by one of our locations!

Thanks for letting us serve you,  
Berry Tractor and Equipment

A handwritten signature in blue ink that reads 'Jonathan T. Berry'.

Jon Berry,  
President.

# Inside TraX

## IN THIS ISSUE

Hamm. ....	3 - 6
Komatsu Parts (G.E.T.) .....	7
Bomag / Screen Machine .....	8
40 Under 40 / Congratulations Jesse Coleman .....	9
Komatsu "Their Finance Program Rocks!" .....	10
Tight-Tail-Swing Performance .....	11
Panel Discussion / Senator Roy Blunt .....	12
The Right Fit .....	13
Your Rental Source .....	14
Superior Broom .....	15
Intelligent Excavator .....	16
Komatsu Partnership Bulletin / Diesel Fuel Fluids .....	17
What's Happening .....	18
Meet our Service Administrators/Rental Coordinators .....	19
Komatsu "The Tech Makes Me Faster" .....	20
Featured Used Equipment .....	21
Used Equipment .....	22



Wichita, KS  
930 South West Str  
316.943.4246

Garden City, KS  
3830 W. Jones  
316.943.4246

Topeka KS  
1750 SW 41st Str  
785.266.9509

Springfield, MO  
2060 N West Bypass  
417.831.2651



## RELIABLE EQUIPMENT RESPONSIVE SERVICE

### CORPORATE

Jon Berry, *President*  
Harry "H" Craig, *Product Support Manager*  
Steve Sanders, *Quality Control/Training Manager*  
David Taylor, *Rental Manager*  
Bill Simmon, *Used Equipment Manager*  
Teri Albers, *Credit Manager*  
Aero Sallee, *Technical Solutions Expert*  
Racheal Bird, *Sales Coordinator*

### WICHITA, KS

Keith Bullard, *Service Manager*  
Ron Barber, *Parts Manager*  
Atlee Preheim, *Sales: 316.304.4245*  
Clayton Shively, *Sales: 316.641.4560*  
Sean Wallace, *Sales: 316.200.8299*  
Jesse Coleman, *Sales/PSSR: 316.990.4710*

### TOPEKA, KS

Oscar Burton, *Service Manager*  
Michael Stevens, *Parts Manager*  
Jake Zeka, *Sales: 785.250.8362*  
Clint Golay, *Sales/PSSR: 785.250.9712*

### GARDEN CITY, KS

Maynard Richmeier, *Service Manager*  
Russell Crone, *Parts Manager*  
Larry Briand, *Sales: 620.260.5174*  
Shane Geist, *Sales: 620.640.0724*  
Israel Ayala, *PSSR: 620.277.2290*

### SPRINGFIELD, MO

Shaun Boyd, *Service Manager*  
Tom Miller, *Parts Manager*  
Jason Baer, *Sales: 417.849.4589*  
Brian Bettencourt, *PSSR: 417.299.0004*



## BACKGROUND

Drive nearly any highway in northeast Kansas and you're likely to see a tractor trailer rig, paving crew or other equipment bearing the striking turquoise blue logo of Hamm Companies. In fact, it's entirely likely that Hamm worked on the very roadway on which you're driving.

Based out of Perry, Kansas, northeast of Topeka and the original home of the Hamm family, the earliest days of the business date back to the '40s when Norman Ray Hamm ran one of the largest custom cutting operations around. So complete in its service and so focused on its employees it was called Hammtown. This traveling operation included 10 new Massey Ferguson 95 self-propelled combines, a mobile gas heated shower and kitchen. Running the length of the wheat belt from Texas to Minnesota during harvest, the grain trucks sported the familiar turquoise blue that adorns all Hamm equipment to this day.

Today Hamm has over 500 employees but the same total dedication to the customer delivered through a talented and engaged work force is clearly evident. Hamm Construction is a vertically integrated, independent operating company of Summit Materials providing aggregate, light aggregate, asphalt milling and paving, ready-mix and concrete work, heavy highway, site and



*Kesl recalls this iconic landmark at Hamm's facility in Perry, Kansas when he was a kid. "I always thought it was so cool—never crossed my mind that I'd work for Hamm all these years later."*

# WE BUILD SOLID BUSINESS RELATIONSHIPS

infrastructure, construction and dirt work and waste and recycling services. Hamm covers a lot of bases from supplying aggregate for small townships and governmental entities to large road paving projects for local and state entities, public infrastructure projects and site work for private developments.

## KOMATSU & HAMM

The presence of Komatsu is a relatively recent addition to Hamm's equipment fleet. Jake Zeka, Berry Tractor Heavy Equipment Sales, "won a war of attrition" as termed by Chase Kesl, General Manager of the Equipment Division for Hamm. "I don't know how many times he showed up at our office and every time would leave information and a card and drive away. One day I pulled up and he was waiting for me outside of the shop so I couldn't ignore him!" Kesl exclaimed. "It was well worth our time as we were in the market for an excavator configured specifically for mass excavation. Jake went the extra mile-and-half for us."

Going the extra mile included a trip for Kesl, Ryan Blosser, VP-Hamm Aggregates and Construction; and Pat Blosser, Director of Special Projects, to Komatsu's proving ground in Cartersville, Georgia followed by Birmingham, Alabama where Hamm representatives could actually try out a machine



(L to R) Ryan Blosser, VP -Hamm Aggregates & Construction; Jake Zeka, Heavy Equipment Sales, Berry Tractor; Chase Kesl, General Manager - Equipment Division, Hamm Construction.

with the shorter arm and six yard bucket. "Berry doesn't have a 650 sitting around just waiting to be demonstrated so I had to find a similarly configured machine. We got lucky and found one," Zeka said. "Having the chance to run a PC650 set up exactly as we wanted it really sealed the deal," Kesl continued.

"Comfort, ride quality, visibility – the entire operator station – is really top-notch. To actually see and operate the machine really provided the comfort



PC650

Hamm's PC650 made short work of its first job at Topeka's Forbes Field, removing 8,000 x 200 feet of 24-inch thick concrete runway. The machine was specified for mass excavation with a shorter arm and 6 cubic yard bucket.

level we were looking for," Kesl explained. The lease deal on the PC650 has resulted in added presence of the Komatsu rental machine on Hamm job sites including PC360LC and PC360LCi excavators and a D65PXi doing infrastructure and site preparation work on the \$100 million Wheatland Village mixed use development in south Topeka.

## HAMM & BERRY

"I don't really care what shade of yellow the equipment is as long as it's backed by service. Our experience with Berry to date has been great. It's like Berry has a truck parked on the highway, pointed our direction – the response is incredible," Kesl said. "This is also true of the rental equipment. If we have a problem, a replacement machine shows up immediately."

Kevin Jackson, Heavy Equipment Service Manager, works closely with Oscar Burton, Berry Service Manager in Topeka. "Oscar 'hears' me – really listens. My day starts at 6:00 in the morning and the clock often doesn't stop until 9:00 at night. The day is 'full contact' so if I pick up the phone, I can absolutely count on Oscar to answer and respond with immediacy which is really important," Jackson explained.

Kesl continued, "What I see from my chair is a company with a strong commitment and vast resources but super-responsive like a small family business without all the layers of people and complexity. This meshes perfectly with Hamm and the way we operate." ■



*Oscar Buton, Berry Tractor Service Manager, speaks with Chase Kesl, General Manager - Equipment Division for Hamm, on a southwest Topeka job site. "The line of communication between Hamm and Berry is wide-open, free-flowing and responsive. If we've got an issue, Berry is there for us," Kesl said.*



*Two PC360's doing infrastructure work on a mixed use commercial development in southwest Topeka. The machine in the foreground is an "i" model designating the built-in-3-D GPS connectivity.*

# APPLIED TECHNOLOGY



A PC360LCi doing infrastructure work on a mixed use commercial development in southwest Topeka.



Josh Meador, Jobsite Foreman, talks with Jake Zeka of Berry about the performance of the D65PXi. "The GPS synchs right up every morning without fail."

# KOMATSU®



"I really like runing the 360— it is so smooth." Derick Schulz, Hamm equipment operator.

 **BERRY**  
TRACTOR



**BOMAG**  
FAYAT GROUP



**SCREEN MACHINE INDUSTRIES, INC.**



# EMPLOYEE SPOTLIGHT

## CONGRATULATIONS

**Jesse Coleman**

*being selected for*

**40  
UNDER  
40**

**WICHITA  
BUSINESS JOURNAL**



Name: Jesse Coleman  
Employer: Berry Tractor (A Division of Berry Companies Inc.)  
Age: 37  
Place of birth: Wichita, KS  
Spouse: Megan Coleman  
Children: Daughters Morley Coleman (6) and Hadley Coleman (4)  
Where do you live? Northwest Wichita, near Maize.

What is your fantasy job? I get to play with excavators and dozers for a living. For any kid that grew up playing with toy tractors, how could that NOT be a fantasy job? However, if I could do anything else I'd work in baseball in some capacity.

What is your biggest achievement? I went through some down years when I was younger so I have multiple biggest achievements, such as marrying my wife, furthering my education at Butler and Tabor, and getting on board with a company like Berry that fosters and encourages personal and professional growth. Hitting rock bottom and getting to this point in my life is one big, massive achievement in my book.

What words do you live by? "Be great at dealing with failure, be horrible at accepting it."

What have you done to mentor others? I like to help those who are trying to be better at something, whether it be personal or professional. If someone is willing to grow, I'm willing to help in any way that I can.

How are you involved in the community? I help coach my oldest daughter's softball team at Maize Rec. I also like to be involved in Maize Schools as much as I can by getting fundraising event sponsorships.

Best show/event you've ever seen? Dave Matthews Band puts on a great concert, but I was blown away by the atmosphere of the KU games at IBA during the NCAA Tournament.

How much time do you spend on social media each day? Just enough, which is much less than I have in the past. I'd rather live in the moment, so I'd say 15-20 minutes a day combined.

Who is your favorite person to follow on Twitter? I don't do Twitter, it's never been a draw for me.

What podcasts do you listen to? I don't have any go-to's, but I tend to search for those centered around the construction industry.

Hobbies: Chasing my kids has become my biggest hobby, but if I'm not doing that I love being outdoors (fishing, mountain bike riding, etc.). My family spends a lot of time during the summer on our boat, usually at Cheney but we switch it up sometimes and explore other lakes. I also really like gardening, and one day hope to have a hobby farm.

On my 21st birthday I... went to Old Chicago and bought a beer.

Morning person or night owl? Both! I'm fortunate enough to be able to get by on limited sleep, and I'd actually do away with it if I could.

Any tattoos? Yeah two, nothing cool though. Just battle scars from being young and dumb.

The people in this room would be surprised to know that I... would like to retire as a pumpkin farmer.

What does Wichita need to attract and retain young professionals? I think we're on the right track as is, considering what this city looked like in my younger years when most outsiders thought we only had one stoplight. If I was hoping to attract anything though, it'd be more options for entertainment. I'd love to see TopGolf come here, and I'm really looking forward to getting a new stadium on the river with a Double A affiliate.

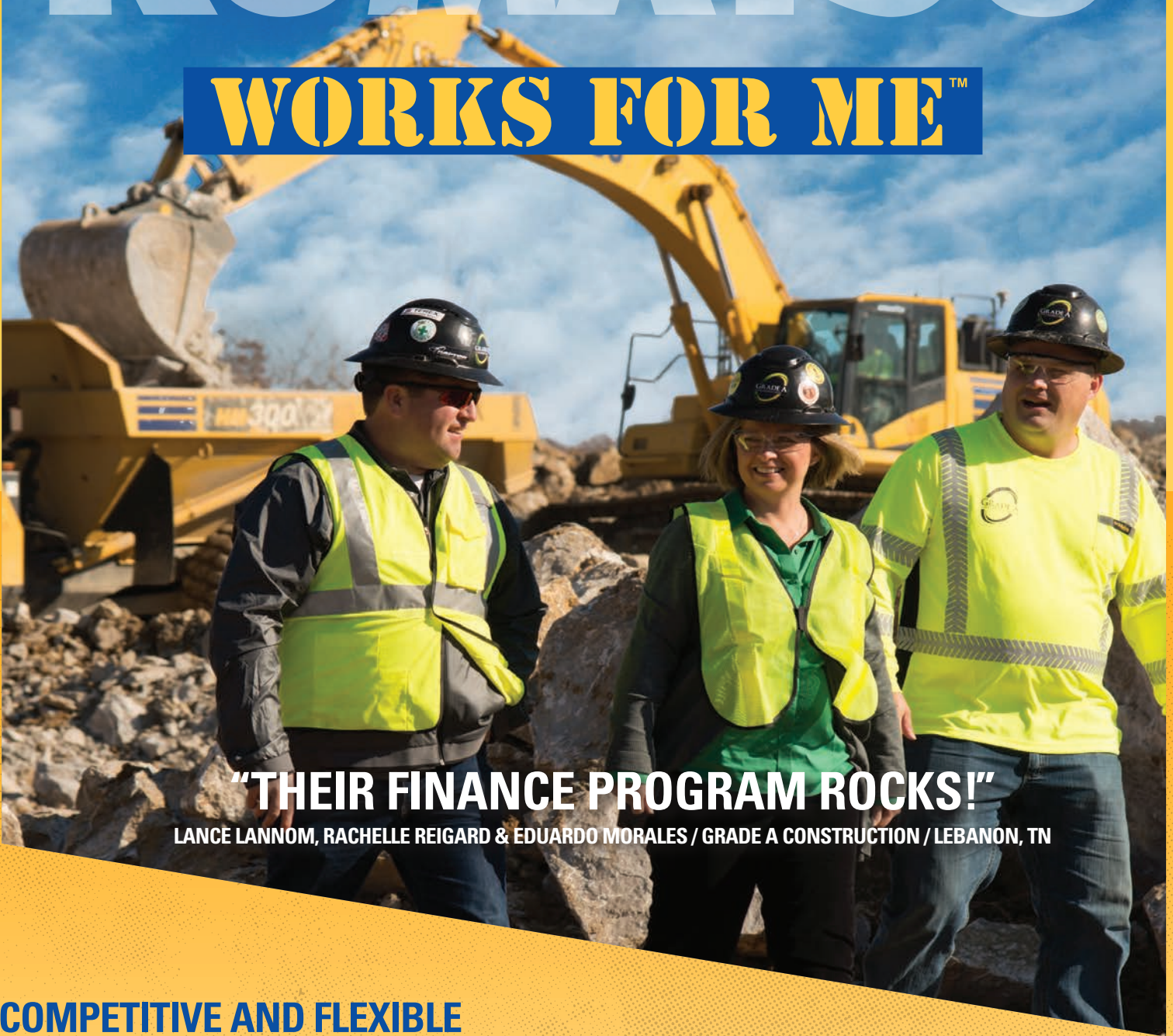
Walk-Up Music: "Hero" by Skillet. This songs gets me pumped up, and it's lyrics speak to me as someone who needed saving at one point in my life.



**Jesse and wife Megan**

# KOMATSU®

## WORKS FOR ME™



**"THEIR FINANCE PROGRAM ROCKS!"**

LANCE LANNOM, RACHELLE REIGARD & EDUARDO MORALES / GRADE A CONSTRUCTION / LEBANON, TN

### COMPETITIVE AND FLEXIBLE

**KOMATSU**  
*FINANCIAL*

"Komatsu has been a great partner for us. They've been with us through the years, even when we started small and not many other places wanted to talk to us. They believed in us and helped us grow. From a custom financing plan to tech like KOMTRAX, to customer service and Komatsu CARE, and of course reliable products—they offer everything to help our bottom line grow." **Rachelle Reigard, President**

# KOMATSU®

THAT'S WHY I AM KOMATSU

[komatsuamerica.com](http://komatsuamerica.com)

© 2018 Komatsu America Corp. All Rights Reserved



## TIGHT-TAIL-SWING PERFORMANCE

### New excavator delivers outstanding lift capacity; KomVision bird's-eye-view camera available



Andrew Earing,  
Product Manager,  
Tracked Machines

You can get dynamite performance in a small package. Komatsu's Tier 4 Final PC238USLC-11 proves it with a heavy counterweight mass and rounded cab that provide true tight-tail-swing performance and greater lift capacity than most conventional excavators of the same size. And, it boosts productivity up to 4 percent compared to the Dash-10 with a new viscous fan clutch that lowers engine parasitic loads.

"The PC238USLC-11 maintains the tight-tail-swing radius of its predecessor,

making it well suited for utility and highway applications and when working in confined spaces," said Andrew Earing, Product Manager, Tracked Machines. "The machine's contoured cab profile and sliding door allow the cab to swing within the same radius as the counterweight. The additional counterweight remains standard, giving the PC238USLC-11 equal or better lift capacity than conventional models in the same size class."

The PC238USLC-11 is available with Komatsu's new KomVision, a bird's-eye-view camera system that combines input from three cameras into a surround-view image of the machine and its environment that improves operators' situational awareness.

#### Monitor panel improvements

Komatsu upgraded the high-resolution, LCD monitor panel, incorporating the standard rearview camera display with gauges. "Ecology Guidance" provides fuel-saving information to the operators, and they can still choose from six working modes to most effectively match the application, attachment and working conditions.

"In addition to the PC238USLC-11 measuring 40 percent shorter than the conventional PC210LC-11, this machine offers class-leading serviceability with quick access to the DEF pump and filter, PPC valves, batteries and aftertreatment components," said Earing. "Durability is second-to-none, with thick-plate steel used on the revolving frame, heavy-duty boom and arm structures, and easy-to-access cooling-system-debris screens. Overall, the PC238USLC-11 is a true purpose-built, short-tail excavator designed and crafted to outlast the competition." ■

Komatsu's PC238USLC-11 excavator features a heavy counterweight mass and rounded cab that provide true tight-tail-swing performance and better lift capacity than most conventional excavators of the same size. A new viscous fan clutch lowers engine parasitic loads, increasing productivity up to 4 percent.



# PANEL DISCUSSION

## Senator Roy Blunt — “Tax Cuts & Job



**B**erry Tractor of Springfield was privileged to be invited to participate in a panel discussion hosted by Hunter Chase & Associates alongside Hartman & Company featuring Missouri U.S. Senator Roy Blunt on Wednesday, May 30, 2018. The discussion centered around how the Tax Cuts & Job Act, signed in December, has had positive impacts on local business industries and improved the economy at both the local and national level.

Both Mary Beth Hartman, President of Hunter Chase and Brian Bettencourt, P.S.S.R. for Berry Tractor along with local business officials from the Springfield area were asked to describe how their businesses had shown significant improvement since the tax reform bill had been passed. Many of the benefits that local businesses have noted have been the ability to offer more jobs, as well as bonuses for their current employees. It can also be seen in the local area through the many infrastructure improvements being made in roads and bridges in the Southwest Missouri area. At Berry Tractor, there has been increased demand for more inventory as well as an upswing in both Parts & Services, especially in the Springfield area.

Berry Tractor is proud to support its local communities as well as its loyal customers by investing its energy and resources to help out with the long-lasting effects that appear to be benefitting these businesses from the Tax Cuts and Job Bill. Many of Berry Tractor's customers and customers' employees have reported that they have increased work and work output, which has a direct effect on their pocketbooks. The positive effects of this bill shows a bright outlook for the future of American industries.



## THE RIGHT FIT

### New wheel loader for specialized needs offers improved production and fuel efficiency

To do a job right, an operator needs the correct equipment. For a certain set of customers, that machine is the Komatsu WA480-8 wheel loader.

“The WA480 fills a need for a select group of users,” said Komatsu Product Marketing Manager Craig McGinnis. “For them, the WA470 isn’t big enough, but the WA500 is too much. The WA500 is approximately 20 percent larger than the WA470 when it comes to horsepower, tipping and other metrics, while the WA480 is closer to 8 percent bigger, providing a much better fit.”

The 56,262-pound WA480-8 wheel loader replaces its Dash-6, Tier 3 predecessor and sports a 299-horsepower Tier 4 Final engine that delivers as much as 20 percent greater fuel efficiency. Komatsu’s dual-mode Engine Power Select System lets operators choose between two standard options: E-Mode for greater fuel efficiency during general loading or P-Mode when they require maximum power output for hard digging operations or uphill climbing. The E-Mode Light option, which is selectable from the monitor, further reduces fuel consumption.

The WA480-8 is equipped with a steering wheel, but customers can opt to replace it with Komatsu’s Advanced Joystick Steering System (AJSS), which allows operators to handle steering and directional travel through wrist and finger control.

#### Buckets of efficiency

Komatsu further enhanced the productivity of the WA480-8 by adding an auto-dig function that enables the machine to automatically lift the boom and curl the bucket when in a pile – a feature that was previously offered only on the larger WA500 and WA600 models. The WA480-8

also includes a redesigned bucket that is available in 6.0- or 6.5-cubic yard capacities.

“We reconfigured the curves in both the front and back of the bucket to increase productivity by as much as 7 percent compared to the previous model,” detailed McGinnis. “The design enables material to flow into the bucket easily and also helps with load retention to prevent material from spilling over the sides.”

#### In-cab experience

In addition to enhanced engine performance and overall design, the WA480-8 delivers upgrades that improve the operator experience. The cab boasts a low-noise design, an Electronic Pilot Control air-suspension seat, an auxiliary jack, a pair of 12-volt outlets and two 7-inch, high-resolution, color monitors. One displays machine diagnostics and menus while the other is for the rearview camera. ■



Craig McGinnis,  
Komatsu Product  
Marketing Manager

The new Komatsu WA480-8 has a 299-horsepower, Tier 4 Final engine that boosts fuel efficiency up to 20 percent and a redesigned bucket that increases productivity by as much as 7 percent.



# RENTAL



## YOUR RENTAL SOURCE for HEAVY EQUIPMENT



CRAWLER DOZERS



WHEEL LOADERS



MOTOR GRADERS



EXCAVATORS



INTEGRATED  
GRADE CONTROL



HYDRAULIC BREAKERS



ARTICULATED TRUCKS



BROOMS



COMPACTION



SCREENS & CONVEYORS



### Equipment

Berry tractor offers clean, late model equipment for rent or rent-to-purchase. Each rental unit is inspected before delivery. These units are maintained for quality and safety and are ready for peak performance.

### Uptime

Let Berry Tractor worry about keeping you productive in the field. If there is a problem with the equipment, we either fix it right away or we will send a replacement unit to keep you up and running.

### Competitive Rental Rates

Rental rates are based on a maximum of eight hours of operation, per 24-hour day; 40 hours per seven-day week; and 160 hours per 28-day four-week period. Overtime will be prorated. All Berry Tractor rental equipment is for sale. Contact your rep today to get set up with a rental purchase option.

David Taylor,  
Rental Manager  
316.943.4246



Go to: [www.BerryTractor.com](http://www.BerryTractor.com) and  
download our credit application to get  
started today!

*All rates are quoted FOB our facilities and do not include taxes, damage waiver, or transportation. Delivery/Pickup is available upon request at an additional charge. Proof of insurance is required or a physical damage waiver of 15% of the equipment rental will be charged. Fuel charges apply to machines not returned with a full tank of fuel. See Berry Tractor's Rental Agreement for full terms and conditions.*

# Superior Broom



*"Superior Quality  
and Performance!"*



**BERRY**  
TRACTOR

# INTELLIGENT EXCAVATOR

## New model offers added stability, excellent over-the-side lift capacity in efficient combo package



Renee Kafka,  
Komatsu Product  
Specialist

Have you ever wanted more? The PC390LCi-11 excavator from Komatsu provides more stability, achieving excellent balance among power, speed and fine control. This machine utilizes the upper structure and engine of the PC360LC models and the undercarriage of a 400-class machine. Now, Komatsu has taken that concept and made it intelligent with the introduction of its new Tier 4 Final PC390LCi-11.

“The *intelligent* Machine Control PC390LCi-11 delivers the exceptional production and speed of the PC360LCi-11, with full-factory, 3-D Global Navigation Satellite System machine control along with increased stability from its up-sized undercarriage,” said Komatsu Product Specialist Renee Kafka. “This makes for the perfect combination in applications such as utility or wherever heavy lifting occurs.”

Quick Specs on Komatsu’s PC390LCi-11 Excavator			
Model	Net Horsepower	Operating Weight	Bucket Capacity
PC390LCi-11	257 hp	87,867-90,441 lb	.89-2.91 cu yd

Komatsu’s PC390LCi-11 delivers the exceptional production and speed of the PC360LCi-11, with full-factory, 3-D Global Navigation Satellite System machine control along with increased stability from its up-sized undercarriage, making it a great fit for trenching or heavy-application work.

The 257-horsepower PC390LCi-11 is the fourth installment in the *intelligent* Machine Control excavator lineup. It leverages the proven technology first introduced on the PC210LCi-10, including semi-automatic operation that goes beyond traditional indicate-only systems. Once target elevation is reached, the machine keeps the operator from digging deeper, eliminating overexcavation and the need for expensive fill.

### ***intelligent* Machine Control benefits**

The Steer-to-Polyline feature helps operators actively dig to a center line, keeping a utility trench on track and minimizing waste. It’s also easy for operators to create simple surfaces quickly for pipe runs by themselves.

“To increase comfort and convenience, the PC390LCi-11 comes standard with the machine-control-enhanced joysticks that were initially introduced on the PC210LCi-11,” noted Kafka. “Whether it is production excavating, utility trenching or heavy-attachment work, this machine helps make operators’ jobs easier, while reducing material costs by minimizing overexcavation.” ■





# WHAT'S HAPPENING

## Berry Tractor participates in the "Sundown Parade"



It's an annual event for Berry Tractor, Berry Material Handling, White Star Machinery and Berry Companies in Wichita. Employees and their families are all invited to participate in the Sundown Parade at Riverfest each year in May. Everyone gathers in downtown Wichita for food and fun and then walk or ride the floats through the streets of Wichita. Of course, the Komatsu, Bobcat and Yale equipment are always the big and best part of our entry at the parade. *It's always a fun time for all!*



## Other Berry Tractor Events



Berry Tractor sponsors the Sedgwick County Fair, Cheney, KS.



Berry Tractor at the 4 State Farm Show, Pittsburg, KS.



Berry Tractor serving lunch for employees at Mies Construction, Wichita, KS.



Berry Tractor serving lunch for employees at Nowalk Construction, Goddard, KS.

## MEET OUR SERVICE ADMINISTRATORS/ RENTAL COORDINATORS



### Lynn Roulston - Wichita

Lynn has been with Berry Tractor for 4 years. Lynn loves being a service administrator and enjoys *"instructing"* the guys in her department! Lynn is single and has one son Kadence. Her hobbies include riding her Triumph motorcycle, swimming, knitting and crocheting. Lynn graduated from Berry Companies Leadership Development Program last year and has served on Berry Companies Christmas committee for two years.



### Mike Shilt - Springfield

Mike has been with Berry Tractor for 2-1/2 years and in the construction industry for basically the last 20 years. Mike started with Berry Tractor as a sales rep. For the last 1-1/2 years he has been working in the rental and service department. His favorite part of the job is just being around the equipment.

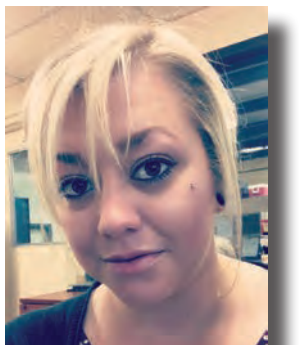
Mike has teenage boys ages 19 and 16. Most of his time is spent chasing them around the state when they play baseball. His favorite teams are the Kansas City Chiefs and the Kansas City Royals. He enjoys attending both sporting events and says the atmosphere at Arrowhead is like no other.

Mike enjoys a trip to Mexico every fall to enjoy the sunshine and beach, while everyone else in Missouri is hating the weather.



### Paula Austin - Topeka

Paula has been Service Administrator/Rental Coordinator for the past year at Berry Tractor, Topeka. Paula is married to husband Keith. They enjoy taking the Harley for a spin when time allows. They have two adult children and 6 grand children. Paula enjoys thrift store shopping and antiques in her spare time— of course, after doing the cooking, cleaning and laundry!



### Victoria Schultz - Garden City

Victoria has been Service Administrator for Berry Tractor in Garden City for the past 5 years. Victoria was born in Salina, Kansas, but grew up in Garden City. In her spare time she enjoys cooking and watching Netflix and Hulu, along with spending time with her boyfriend.

# KOMATSU®

## WORKS FOR ME™



**“THE TECH MAKES ME FASTER.”**

JEROME HAYCRAFT / ASPLIN INC. / FARGO, ND

### INTELLIGENT MACHINE CONTROL

“We have a Komatsu PC210LCi and it’s been better than I even expected. The speed and time you save just having your line work and not having to worry about over excavating—that’s huge. I hated those bigger commercial jobs where you’d have hundreds of stakes marking all your corners, offsets and gridlines. And to not have a need for any of that, especially if it’s an export site or it doesn’t even really have to be, just room for your spoil piles. Keeping track of corners—major time saver! I’d say, with iMC, I’m about a third faster getting the job done.”

SMARTCONSTRUCTION

# KOMATSU

THAT'S WHY I AM KOMATSU

[komatsuamerica.com](http://komatsuamerica.com)



# FEATURED USED EQUIPMENT



**KOMATSU**<sup>®</sup>

2014 Komatsu PC138USLC-10  
#1152471  
3,145 Hrs.  
\$ 97,752



**BOMAG**

2005 BW177D-3 Roller Soil 66' Smooth  
#1157618  
1,295 Hrs.  
\$ 40,236



2015 Wacker Neuson S28-Vertical Skid Steer  
#151773  
830 Hrs.  
\$ 49,342



2012 TRail King 30-35 Ton Trailer  
#1061446  
\$ 50,000

# USED EQUIPMENT



MAKE	MODEL	DESCRIPTION	SERIAL	HOURS	YEAR	SELL PRICE
1157618 Bomag	BW177D-3	Roller Soil 66' Smooth	901581531227	1,295	2005	\$ 40,236.84
1168351 Broce	RC350	Broom	401274	2,634	2001	12,434.21
1162267 CAT	924H	Wheel Loader	HXC02002	9,59	2011	52,631.58
1168138 Hitachi	EX450LC-5	Excavator	7740	10,061	1999	39,473.68
1163847 Interstate	Trailer	Trailer	IJKDLA204S1200066	N/A	1994	4,210.53
1047556 Komatsu	D51EX-22	Dozer	B12114	2,730	2011	94,736.84
1162250 Komatsu	D61EX-12	Dozer	1148	9,606	2000	39,473.68
1056232 Komatsu	D65EX-17	Dozer	1516	4,982	2012	129,144.74
1163328 Komatsu	D65WX-15EO	Dozer	69054A	7,015	2007	87,205.93
1066423 Komatsu	D65WX-17	Dozer	1959	1,463	2013	147,243.37
1079580 Komatsu	GD655-5	Grader	1079580	2,066	2013	177,960.40
1152571 Komatsu	PC138USLC-10	Excav 10-19 Ton	40416	3,145	2014	97,752.63
1152474 Komatsu	PC138USLC-10	Excav 10-19 Ton	40535	3,365	2014	95,294.74
3321204 Komatsu	PC228USLC-3	Hyd Excavator	21210	14,713	2002	40,789.47
1168091 Komatsu	PC360LC-11	Excav 30-39 Ton	A35691	1,515	2017	281,578.95
1167873 Komatsu	WA200-6	2.50 Yd Wheel Loader	71639	5,119	2013	78,947.37
1100710 Komatsu	WA320-7	3.25 Yd Wheel Loader	A36251	8,644	2015	85,526.32
1165437 Komatsu	WA450-5L	5.5 Yd Wheel Loader	A36116	12,594	2003	65,789.47
3322095 Superior Broom	DT803	Broom DT80J	805230	1,843	2005	17,357.89
1061446 Trail King Ind	TK70SA	30-35 Ton Trailer	ITKA04827CM109076	N/A	2012	50,000.00
1103913 Train King Ind	TKT50LP	20-25 Ton Trailer	ITKC03036FR026902	N/A	2015	32,680.10
1161112 Trail King Ind	TK110HDG	50-55 Ton Trailer	ITKJ053382MO77629	N/A	2002	38,750.00
1164774 Trail King Ind	TK40LP	Tag Trailer	ITKC024207M089018	N/A	2006	8,552.63
1151773 Wacker Neuson	S28-Vertical	Skid Steer	WNCS0403CPUM00697	830	2015	49,342.11

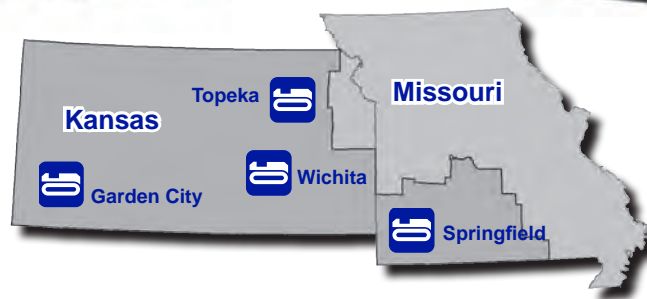
**CALL Bill Simmon for more information 316.943.4246  
or email: [bsimmon@berrytractor.com](mailto:bsimmon@berrytractor.com)**

Berry Tractor  
930 South West Street  
Wichita, KS 67213

PRSR STD  
U.S. POSTAGE  
PAID  
WICHITA KS  
Permit No.628



Reliable Equipment • Responsive Service



[www.berrytractor.com](http://www.berrytractor.com)

Wichita, KS  
930 South West Str  
316.943.4246

Topeka KS  
1750 SW 41st Str  
785.266.9509

Garden City, KS  
3830 West Jones  
620.277.2290

Springfield, MO  
2060 N West Bypass  
417.831.2651